



Show Catalogue

Friday 11th July 2025



Proudly sponsored by



WELCOME

to the 45th Tennant Creek Show



Events like the Tennant Creek & District Show are important days for our vast Barkly region. The show is an opportunity for everyone to come together from all of our towns, communities, stations and beyond, to relive old fond memories, and to create new ones with family and friends.

The show conjures up different memories for everyone, whether it's the fear you feel as you hold on tight to the rails of the Cha-Cha, the disappointment that you didn't quite hit the target to win the massive pink bunny, the moment of excitement as you hear the music of sideshow alley, the immense satisfaction of eating a dagwood dog or some freshly baked scones from the CWA ladies, the overwhelming sense of pride when you see that your entry has won 2nd place and so much more.

Like any small town, it is the people behind the scenes that make community events like this happen. We would like to thank each and every person and organisation that has been a part of the show over the years, it is because of these volunteers that such a remarkable achievement each year can be celebrated. Enjoy each and every moment the show has to offer, and remember, "It's just a great day out!"

From The Tennant Creek & District Show Society

*More information & updates can be found at
www.tennantcreekshow.com.au*



SCHEDULE

of events



8am - Gates open

8am - Barkly Bush Trail opens

8am - Sideshow Alley opens

8am - Kids Zone opens

10am - WW1 Light horse Display performance

11am - Out of Abingdon performance #1

11am - Scarecrow Comp judging, Arts & Craft Pavilion

12noon - WW1 Light horse Display performance

2pm - Out of Abingdon performance #2

3pm - WW1 Light horse Display performance

3pm - Barkly Bush Trail competition closes

3pm - Kids Zone closes

3.30pm - Barkly Bush Trail Winner drawn

5pm - Gates close



THANK YOU

to all our Sponsors & Contributors



Platinum Sponsor



Bronze Sponsors



THANK YOU

to all our Sponsors & Contributors



Contributors



GIRL GUIDES
AUSTRALIA
NSW ACT NT

EASA

COUNSELLING • TRAINING
MEDIATION • CONSULTING



TennantCreek*Today*

Relax in TC

Mary Kingham-Bradley





Simply have the most entries at the show...

The NT Show Council is sponsoring this award for schools this year. The aims of this sponsorship are to encourage school participation in NT agricultural shows, to raise awareness of NT show competitions, to increase school/student show participation and to grow the next generation's involvement in NT shows.

Open to all Urban & Remote Schools (Primary & Secondary), Early Learning Centers & Preschools

**WIN \$1,000
FOR YOUR
SCHOOL!**

Simply have the
'Most Entries'
across any school category
/ project at this years
Tennant Creek Show

TERMS & CONDITIONS:
Prize is awarded to School and not an individual to purchase art & craft supplies for future entries. Competition is open to Early Learning / Childcare / Preschool, Primary, Middle & Secondary Schools. Winning School will be determined by the Show Society Committee, based on entries received. Winner will notified in the week following the Show with prize paid by Show Society.

The following award are offered to the school in each category which submits the most entries Entries may be placed by any of the school admin, teachers, or support staff, and can be entered in separate registrations and over varying dates – as long as the school's name is written in the "Company" box when registering.

Student's names must be inserted as the "Entrant" when their individual school work is entered, and class names must be inserted for "Entrant" for group projects.

COMPETITIONS



2025

SCARECROW COMPETITION

TRADITIONAL LOOK SCARECROW

Open to all - schools, groups & general public



Prize money for 1st, 2nd & 3rd
\$2 Entry fee

Min size 30cm / Max size 180cm
Scarecrow must be self supporting
Be creative

Entry form- www.tennantcreekshow.com.au



2025

BEST DECORATED CAKE!

Calling all bakers...



To celebrate the 45th year of the
Women's Weekly Children's Birthday Cake Book,
your cake must be from this book!

\$250 prize for Best Decorated - Adult
\$100 prize for Best Decorated - Junior

\$2 Entry fee

Thank you to Relax in TC for sponsoring these prizes
Entry form- www.tennantcreekshow.com.au



COMPETITIONS



2025

SEWING COMPETITION!

Calling all sewers...

\$100 prize awarded to the Most Creative item!

\$2 Entry fee

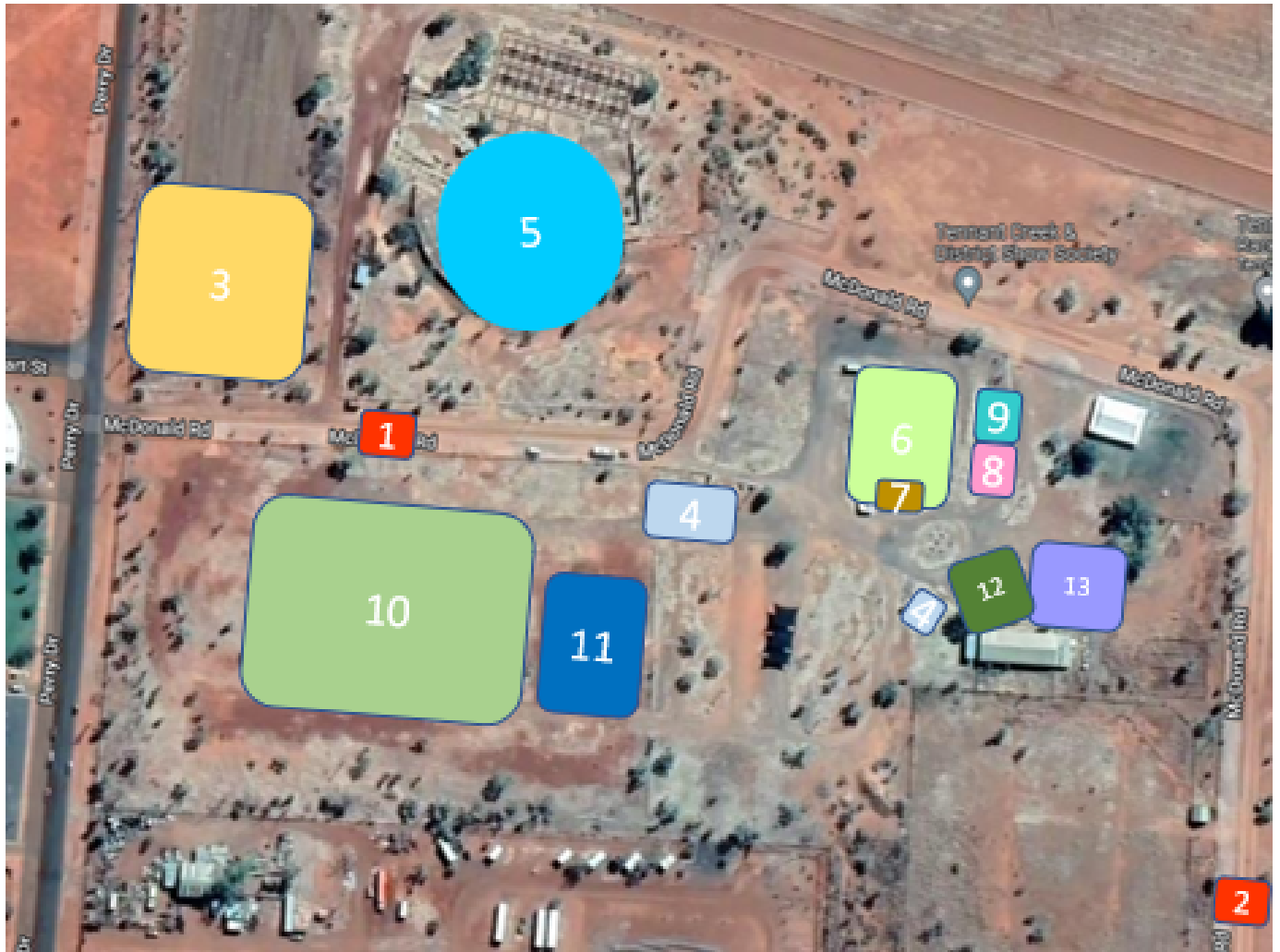
Thank you to Mary Kingham-Bradley for sponsoring
this prizes

Entry form- www.tennantcreekshow.com.au



SHOWGROUNDS

Map 2025



1	Ticket Booth - Main entry
2	Ticket Booth - Back entry
3	Public Parking Area
4	Public Toilets
5	Cattle Display / Rodeo Arena
6	Exhibition Pavilion/ATM/First Aid
7	Show Office / Barkly Bush Trail

8	CWA Hall
9	Art and Craft Pavilion
10	Sideshow Alley
11	Live Entertainment Area
12	Kids Zone / Parks and Wildlife
13	Live Entertainment Area

ENTERTAINMENT



Out of Abingdon



Warwick and Tina's stripped back guitar, double bass, vocal blend is a grooving, soothing, sonic elixir in a bustling soundscape.

The couple's onstage chemistry has charmed audiences worldwide for over 15 years, known for original bluesy, lounge tunes and unexpected, reimagined contemporary tunes, OUT of ABINGDON are a crowd favourite.

<https://www.outofabingdon.com.au/>

WW1 Light Horse Display

Mick Batchelor is bringing his well known WW1 Light Horse Display to town!

A recreation of a WWI-era Light Horse camp including bell tent, picket line for animals, camp stretcher and banners

Interpretive displays with audio history and background music of the era

Photo opportunities with mounted display
Information talks on history of the Light Horse

<http://mickbatchelorlighthouse.com.au/>



ARTS & CRAFT PAVILION



Get your entries ready for the 2025 Show

Categories include:

- Art
- Craft
- Photography
- Hobbies & Collections
- Needlework
- Cooking
- Horticulture
- Agriculture

\$2 entry fee per piece

PRIZES

Overall People's Choice Award – Prize
Money of \$100 and Certificate
Donated by ****

Sewing Prize of \$100, donated by Mary
Kingham-Bradley

OPEN SECTION

Champion Exhibit for each Category - \$50 &
Certificate, donated by ****

Best Decorated Cake - \$250 & Certificate,
donated by Relax in TC

Best Preserve - \$50 & Certificate, donated by
the Tennant Creek and District Show Society

1st, 2nd, 3rd prize cards

JUNIOR SECTION

Best Junior Exhibit for each Category - \$20 &
Certificate
Donated by ****

Best Decorated Cake - \$100 & Certificate,
donated by Relax in TC

1st, 2nd and 3rd prize cards

Special Section Prizes





GENERAL ENTRY FORM

Attention: the Secretary
 PO Box 515 Tennant Creek NT 0861

I hereby request that you enter, subject to the rules and regulations of the Show Society, the undermentioned exhibits for your show, to be held on the Society's grounds on Friday 11th July 2025.

Entry Details

Section: _____
(please use a separate form for each section)

Name: _____ Age: _____
(for 16years & under)

Address: _____

Phone: _____ Email: _____

Entry #	Class	Description of Entry	Entry Fee (\$2 per entry)
1	_____	_____	\$ _____
2	_____	_____	\$ _____
3	_____	_____	\$ _____
4	_____	_____	\$ _____
5	_____	_____	\$ _____
6	_____	_____	\$ _____
7	_____	_____	\$ _____
8	_____	_____	\$ _____
9	_____	_____	\$ _____
10	_____	_____	\$ _____
11	_____	_____	\$ _____
12	_____	_____	\$ _____
13	_____	_____	\$ _____
14	_____	_____	\$ _____
15	_____	_____	\$ _____
TOTAL			\$ _____

Please note: No late entries. Fees must accompany entry form which must be signed by exhibitor.

Declaration

I declare these entries to be my own and bon afide property. I give Tennant Creek & District Show Society permissions to take photos and use for marketing purposes.

Exhibitor Name: _____

Exhibitor Signature: _____

Date: _____

AGRICULTURE

Section D



JUDGE: _____

DELIVERY: exhibits with entry forms must be delivered to the Steward at the showground no later than 1400 (2pm) on the THURSDAY before Show Day. No late entries will be accepted.

SPECIAL CONDITIONS: Points awarded for presentation. Fruits and Vegetables should be cut from the plant with secateurs, leaving approximately 2cm of stem attached. If there are sufficient entries, additional classes will be created.

PRIZES:

1st , 2nd & 3rd prize cards

Open Champion Exhibit \$50

Junior Champion Exhibit \$20

ALL ENTRIES MUST BE COLLECTED ON SATURDAY BETWEEN 8AM – 1200PM

OPEN VEGETABLES

CLASS D1: Collection of Home-Grown Vegetables
(Minimum of 4 varieties)

CLASS D2: Tomatoes – 3 ripe or green

CLASS D3: Root Vegetables – mixed or same variety

CLASS D4: Leafy Vegetables – Cabbage / Lettuce / Spinach / Silver Beet

CLASS D5: Pumpkin – any variety

CLASS D6: Exhibitors Choice

FRUIT

CLASS D7: Citrus Fruit – 3 of same variety

CLASS D8: Fruit – any other variety

CLASS D9: Collection of Fruit – minimum 3 varieties

OTHER

CLASS D10: Cut herbs in bunch

CLASS D11: Eggs – 3 (with saucer to test)

CLASS D12: A collection of Bush Tucker

JUNIOR SECTION 16 Year and under

CLASS D13: Vegetables – any variety

CLASS D14: Fruit – any variety

CLASS D15: Animal Shape made from fruit and/or vegetables (fresh or dried) Individual or Group entry



HORTICULTURE

Section E



JUDGE: _____

DELIVERY: exhibits with entry forms must be delivered to the Steward at the showground no later than 1400 (2pm) on the THURSDAY before Show Day. No late entries will be accepted.

SPECIAL CONDITIONS: Points awarded for presentation. Flowers should be cut from the plant with secateurs.

PRIZES:

1st , 2nd & 3rd prize cards

Open Champion Exhibit \$50

Junior Champion Exhibit \$20

ALL ENTRIES MUST BE COLLECTED ON SATURDAY BETWEEN 8AM – 1200PM

OPEN

CLASS E1: Vase of Roses

CLASS E2: One Stem – any flower

CLASS E3: Mixed Flowers – one bunch/vase

CLASS E4: One indoor/outdoor plant in pot

CLASS E5: Bougainvillea – single/double

CLASS E6: One Fern

CLASS E7: Hanging Basket – any variety

CLASS E8: Container of growing cactus/or succulents

CLASS E9: Variety of herbs growing in a container

CLASS E10: Exhibitor's Choice

FLOWERS IN THE FOLLOWING CLASSES NEED NOT HAVE BEEN GROWN BY THE EXHIBITOR

CLASS E11: Arrangement of any garden flowers and foliage

JUNIOR SECTION 16 Year and under. Individual or group entries.

CLASS E12: Arrangement of flowers – fresh/dried or native

CLASS E13: Fairy Garden



COOKING

Section F



JUDGE: _____

DELIVERY: exhibits with entry forms must be delivered to the Steward at the showground no later than 1400 (2pm) on the THURSDAY before Show Day. No late entries will be accepted.

SPECIAL CONDITIONS: All jams, pickles etc. must be presented in screw top jars. No packet mixes are to be used unless stated in class description. Entries on plates should be in clear plastic or oven bags – NOT coloured plastic or alfoil.

PRIZES:

1st , 2nd & 3rd prize cards

Open Champion Exhibit Cooking \$50

Open Best Preserve \$50

Junior Champion Exhibit \$20

ALL ENTRIES MUST BE COLLECTED ON SATURDAY BETWEEN
8AM – 1200PM

OPEN

CLASS F1: Damper – one loaf made from flour, water, rising agent, salt and water only

CLASS F2: Bread/Rolls (3) – hand made

CLASS F3: Bread/Rolls (3) – machine made

CLASS F4: Cake – any variety – not iced (banana bread/ vanilla cake/ tea cake/sponge etc)

CLASS F5: Cake – any variety – iced (orange / hummingbird / chocolate mud / carrot)

CLASS F6: Cupcakes / patty cakes – iced or not iced

CLASS F7: Biscuits (3) – any variety

CLASS F8: Slice (3) – any variety

CLASS F9: Scones (3) – any variety

CLASS F10: Boiled Fruit Cake

CLASS F11: Pie/Quiche – any fillings (except meat)

CLASS F12: Decorated Novelty / Occasion Cake

CLASS F13: Cordial – 1 bottle

CLASS F14: Jam – any variety

CLASS F15: Pickles / Relish / Chutney / Sauce – 1 jar

CLASS F16: Fruit based Butter

CLASS F17: Exhibitor's choice



JUNIOR 5 YEARS & UNDER

CLASS F18: Decorated Arrowroot Biscuits

CLASS F19: Edible Necklace

CLASS F20: Exhibitor's Choice

JUNIOR 10 YEARS & UNDER

CLASS F21: Packet Cake

CLASS F22: Cupcakes

CLASS F23: Decorated Arrowroot Biscuits

CLASS F24: Edible Necklace

CLASS F25: Exhibitor's Choice

JUNIOR 16 YEARS & UNDER

CLASS F26: Scones - plain (3)

CLASS F27: Cake - all varieties

CLASS F28: Cupcakes - decorated

CLASS F29: Decorated Party Cake

CLASS F30: Exhibitor's Choice

NEEDLEWORK

Section G



JUDGE: _____

DELIVERY: exhibits with entry forms must be delivered to the Steward at the showground no later than 1200 on the WEDNESDAY before Show Day. No late entries will be accepted.

SPECIAL CONDITIONS: Any article which has won a prize in a previous Tennant Creek Show is not eligible.

PRIZES:

1st , 2nd & 3rd prize cards

Open Champion Exhibit \$50

Junior Champion Exhibit \$20

ALL ENTRIES MUST BE COLLECTED ON SATURDAY BETWEEN 8AM – 1200PM

OPEN

CLASS G1: Soft toy / doll - any technique

CLASS G2: Cushion - any technique

CLASS G3: Hat - any technique

CLASS G4: Machined Article / Garment

CLASS G5: Bags / Carry All

CLASS G6: Crocheted Article / Garment

CLASS G7: Creative Embroidery - any medium / any technique

CLASS G8: Hand knitted article / garment

CLASS G9: Quilt - cot size

CLASS G10: Quilt - large

CLASS G11: Cross Stitch - any article

CLASS G12: Patchwork - article / garment

CLASS G13: Felt - any technique / any article

CLASS G14: Any other article

JUNIOR SECTION

CLASS G15: Article - Knitted / Crocheted / Embroidered / Machined

CLASS G15: Article - made from a kit



CRAFTS

Section H



JUDGE: _____

DELIVERY: exhibits with entry forms must be delivered to the Steward at the showground no later than 1200 on the WEDNESDAY before Show Day. No late entries will be accepted

SPECIAL CONDITIONS: Any article which has won a prize in a previous Tennant Creek Show is not eligible.

PRIZES:

1st , 2nd & 3rd prize cards

Open Champion Exhibit \$50

Junior Champion Exhibit \$20

ALL ENTRIES MUST BE COLLECTED ON SATURDAY BETWEEN
8AM – 1200PM

OPEN

CLASS H1: Metal work

CLASS H2: Wood work

CLASS H3: Pottery / ceramic

CLASS H4: Fabric Article – decorated / painted

CLASS H5: Handmade jewellery

CLASS H6: Wall hanging – any medium

CLASS H7: Sculpture – any medium

CLASS H8: Toy – hand / machined made

CLASS H9: Paper craft / tole / mâché / decoupage

CLASS H10: Scrapbooking

CLASS H11: Card – 3 handmade

CLASS H12: Article from recycle materials

CLASS H13: Mosaic – any item

CLASS H14: Diamond Painting

CLASS H15: Resin Craft – any item

CLASS H16: Exhibitor's Choice

16YRS & UNDER

CLASS H23: Sculpture

CLASS H24: Pottery

CLASS H25: Woodwork item

CLASS H26: Decorated Fabric Work – Painting

/ Printing / Dyeing

CLASS H27: Artificial Floral Display

CLASS H28: Exhibitor's Choice



JUNIOR 10 YRS & UNDER

CLASS H17: Decorated Pet Rock

CLASS H18: Egg Carton Creature

CLASS H19: Decorated Wooden Spoon

CLASS H20: Play Dough 5yrs & under -

Any article must be of a solid construction

CLASS H21: Group entry – any article / any medium

CLASS H22: Exhibitor's Choice

ARTS

Section L



JUDGE: _____

DELIVERY: exhibits with entry forms must be delivered to the Steward at the showground no later than 1200 on the WEDNESDAY before Show Day. No late entries will be accepted.

SPECIAL CONDITIONS: Any article which has won a prize in a previous Tennant Creek Show is not eligible.

PRIZES:

1st , 2nd & 3rd prize cards

Open Champion Exhibit \$50

Junior Champion Exhibit \$20

ALL ENTRIES MUST BE COLLECTED ON SATURDAY BETWEEN
8AM – 1200PM

OPEN

CLASS L1: Landscape – any medium

CLASS L2: Portrait – any medium

CLASS L3: Still Life – any medium

CLASS L4: Mixed media - collage

CLASS L5: Charcoal drawing

CLASS L6: Print – any subject, any style (screen, lino, etching, lithograph, etc)

CLASS L7: Indigenous Art – any subject, any style

CLASS L8: Computer Generated – any media

CLASS L9: Other – Pastel, Water Colour, Pencil, Inks

JUNIOR

Pre-school – Grade 2

CLASS L10: Collage

CLASS L11: Printing

CLASS L12: Painting

CLASS L13: Drawing

CLASS L14: Group Entry – any medium

Grade 3-6

CLASS L15: Collage

CLASS L16: Printing

CLASS L17: Painting

CLASS L18: Drawing

CLASS L19: Group Entry – any medium

16 yrs and under

CLASS L20: Collage

CLASS L21: Printing

CLASS L22: Painting

CLASS L23: Drawing

CLASS L24: Computer Generated – any media



PHOTOGRAPHY

Section M



JUDGE: _____

DELIVERY: exhibits with entry forms must be delivered to the Steward at the showground no later than 1200 on the WEDNESDAY before Show Day. No late entries will be accepted.

SPECIAL CONDITIONS: Any exhibit may only be entered in one class. All classes will be judge on composition, technical quality and relevance to the subject of the class entered. Prints must be mounted on card suitable for pinning.

PRIZES:

1st, 2nd & 3rd prize cards

Open Champion Exhibit \$50

Junior Champion Exhibit \$20

ALL ENTRIES MUST BE COLLECTED ON SATURDAY BETWEEN 8AM – 1200PM

OPEN

CLASS M1: Art of Landscape – Tennant Creek / Central Australia Landscape

CLASS M2: The Rural Way – pastoral/grazing

CLASS M3: Portrait – individual or group

CLASS M4: Black and White – any subject

CLASS M5: Floral / Plant

CLASS M6: Animal / Wildlife

CLASS M7: Travel – Holiday or Travel photos

CLASS M8: Open Subject

JUNIOR

CLASS M9: Children's – 10 years and under – any subject

CLASS M10: Young Hot Shots – 16 years and under – any subject

CLASS M11: Selfie – a photograph taken of yourself

CLASS M12: Open Subject - anything you wish

PROFESSIONAL / SEMI PROFESSIONAL*

CLASS M13: Open Subject

**This class is for exhibitors who sell their works.*



HOBBIES & COLLECTIONS



Section N

JUDGE: _____

DELIVERY: exhibits with entry forms must be delivered to the Steward at the showground no later than 1200 on the WEDNESDAY before Show Day. No late entries will be accepted.

SPECIAL CONDITIONS: Any exhibit may only be entered in one class. Collections to comprise of a group of 5 or more similar items displayed on a tray or board. Lego are to individual designs (NO KITS).

PRIZES:

1st , 2nd & 3rd prize cards

Open Champion Exhibit \$50

Junior Champion Exhibit \$20

ALL ENTRIES MUST BE COLLECTED ON SATURDAY BETWEEN 8AM – 1200PM

OPEN

CLASS N1: Collection of similar items. 5 or more.

JUNIOR

16 YRS & Under

CLASS N2: Collection of similar items (coins / stamps / teacups etc.) 3 or more

CLASS N3: Lego individual design



PLATINUM SPONSOR



TENNANT MINES

Tennant Mines has started large-scale long-term gold and copper mining in Tennant Creek.

<https://www.tennantmining.com.au/>



BRONZE SPONSORS



Passionate about putting Barkly back on the map and addressing community priorities including social, economic, culture and place-making.



F.M.A Contracting specialises in all aspects of electrical work, including air-con and refrigeration, security installs and data cabling.



NORTHERN
TERRITORY
**SHOW
COUNCIL**

The peak body for the 7 Agricultural Show Societies in the NT, providing them with an avenue to raise & address issues of common interest.



Darrin's Rubbish Removal (Big Bins) is a local business servicing the Tennant Creek area.

SHOW SPONSORS



Blue Whale Solutions

Commercial & Residential Cleaning
Experts in Alice Springs & Tennant
Creek.



Bringing a premium metro
shopping experience to the heart
of regional Australia

SHOW SPONSORS



TennantCreekToday

Available in Tennant Creek every Friday!



SHARE NEWS FROM YOUR COMMUNITY!

Tennant Creek Today is your local paper, we want to know about your stories and celebrate your successes across the Barkly!

Help your paper grow by sharing your stories, events, sports and community achievements.

NEWS and PHOTOS

E: editorial@tennantcreektoday.com.au
Editor: Jodie Powell

WANT TO ADVERTISE?

E: advertising@tennantcreektoday.com.au
General Enquiries: Natalie Woods 0413 707 259

**Every story, every ad, helps us stay local.
Let's make Tennant Creek Today truly yours.**

We are looking for local writers!

Do you love your community and have a couple of hours a week to write stories for your local newspaper?

If you would like more information, send us an email and we will give you a call!

In association with **THE CentralianToday**

LEADING EDGE

Computers

Switched  Service

Jaycar
Electronics

Better, More Technical

Home & Business Computer Sales
Printers, Fax Machines & Consumables
Upgrades, Service & Repairs
Office Furniture
Data Backup & Recovery
Warranty Agents for HP, Toshiba, ASI, Edsys



Network Support & Solutions
Custom-built Systems (PCs & Servers)
Managed Service Agreements
Telephone Systems
Internet Access & Solutions
Jaycar Stockist

LEADING EDGE COMPUTERS
TENNANT CREEK PTY LTD

8963 2300

38 PATERSON ST TENNANT CREEK • FAX: 8962 3127



Follow the Barkly Bush Trail and WIN great prizes!

A fun treasure hunt providing great family fun exploring the show
and collecting gifts.

For children 10 years of age and under

- Grab your Barkly Bush Trail Bag for \$5 at the Show Office (Main Pavilion)
- Find and collect your free gift from participating sites (map is in the bag)
- Remember to get your form stamped!
- Return completed form to Show Office for your chance to WIN the main prize!

Proudly sponsored by





OUR TEAM & COMMITTEE

Wayne Walsh
President
0417 829 383

Pennie Cowin
Treasurer

Shelagh Walsh
Secretary

Alisha Hurn
Administration Officer
0409 032 196

Committee Members

Kevin Barnham
Debbie Barnham
Kirsteen Squires

Cole Court
Tess Nicolussi
Lakota Taber

THANK YOU

The Tennant Creek & District Show Society Committee thank you for taking the time to consider sponsoring our wonderful event.

We look forward to seeing you at our show

CONTACT

Tennant Creek & District Show Society

McDonald Rd, Tennant Creek NT 0860

Phone: 0409 032 196

Email: tennantcreekshow@gmail.com

Website: tennantcreekshow.com.au

Facebook: [tennantcreekshow](https://www.facebook.com/tennantcreekshow)